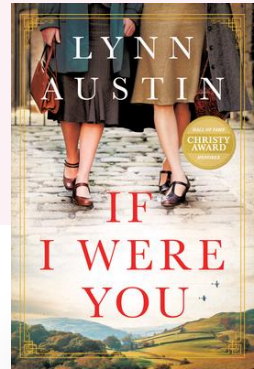




PARTICIPANT GUIDE

IF I WERE YOU
BY LYNN AUSTIN



"Where is the Good Shepherd in all of this suffering and loss?"

EVE DAWSON



DISCUSSION QUESTIONS



1

Q. Audrey and Eve are two women who seemingly have nothing in common - yet their lives are beautifully woven together. Which character did you relate to the most and why?

2

Q. Discuss some of the themes in *If I Were You*. How do Eve and Audrey's beliefs, values, and life experiences, affect the decisions they make as adults?

3

Q. Eve is raised in a poor but loving Christian household, whereas Audrey is raised in an extremely wealthy household where she has an overabundance of 'things' but is totally deprived of love and affection. As the girls grow, they secretly envy one another and deeply desire what the other has. How does this envy impact their friendship over the years?

4

Q. During the war, the breakdown of social class, gender roles and morals increases as traumatised and hurting people navigate the new way of life. How were some of these changes beneficial? How might God use these changes in the lives of individuals?

5

Q. "Where is the Good Shepherd in all of this suffering and loss" (p278). Eve's faith journey, while ending strong, is not without its challenges and can seem like a rollercoaster at times. Hitting rock bottom, she acknowledges feelings of total abandonment and engages in known sin - something she'd refused to do previously. How does this impact her decision making as she moves further and further away from God?

6

Q. Audrey grows up craving love and affection, with a deep desire to be fully known and cherished. When she finds her faith in Christ and begins a relationship with her Heavenly Father, she truly begins to flourish as those deep, and empty voids in her heart are filled with Him. She begins to feel whole. Do you struggle to allow God to fulfil deep needs or desires in your heart? Or do you feel Christ truly meets all your needs?

7

Q. Historical fiction, biographies and storytelling have a way of profoundly impacting the soul, sometimes in a way which textbooks and facts cannot. Was there a moment for you in the book where the horrors of the war came alive? How did this change your perspective of war or challenge your attitudes towards circumstances you may be facing today?

8

Q. Throughout the book, we see Eve having to live with severe consequences to her sin. What are your beliefs about Sin, Consequences, and Punishment? Does God punish sin, or are the natural consequences of sin itself our punishment?

9

Q. Once we have accepted Jesus into our lives, how can we be sure we have been 'made new', and truly believe that we have been forgiven for our sins, past, present and future?

